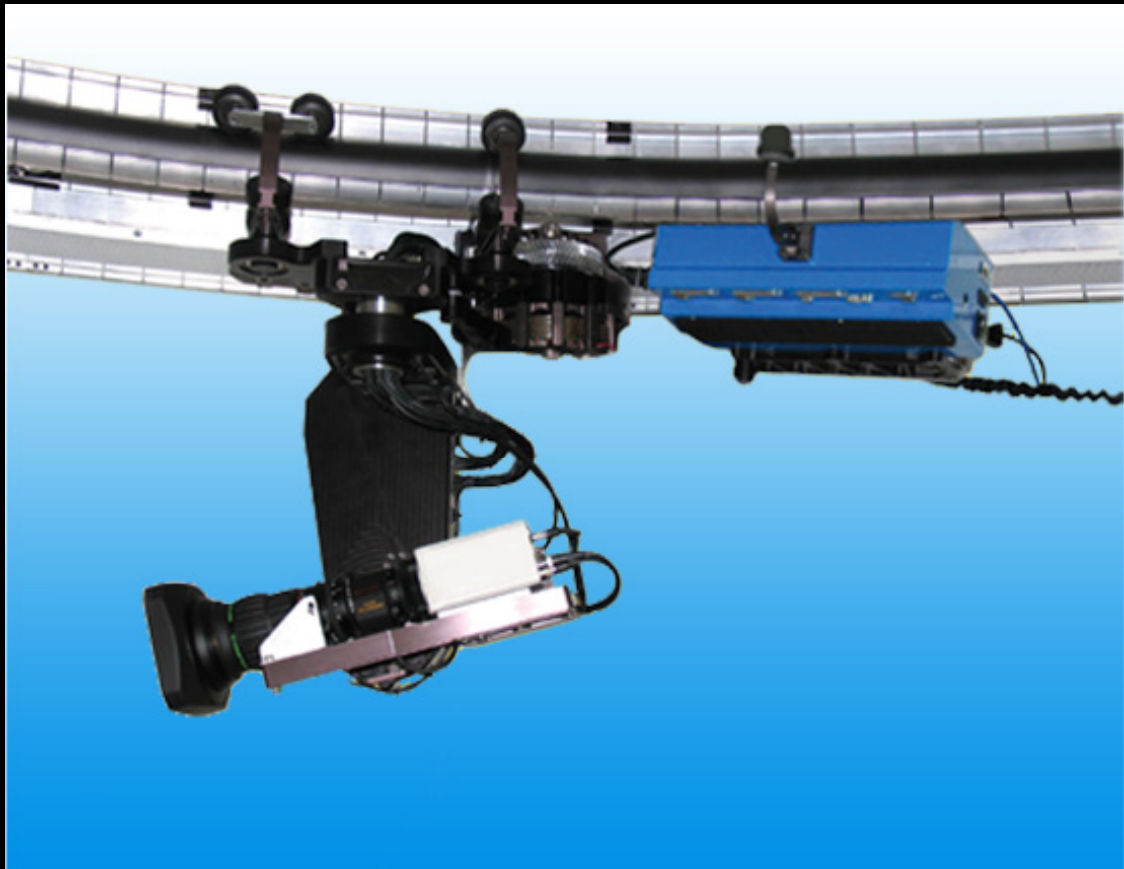




Mini Shuttle Camera Tracking System



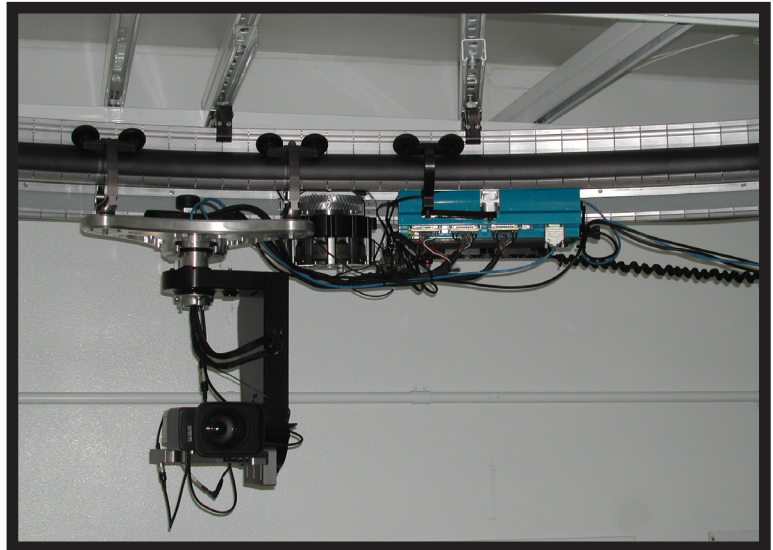
1719 21st Street
Santa Monica, CA 90404
310-453-4866
www.innovision-optics.com

MINI-SHUTTLE

Introduction

After years of pioneering the development of shuttle system technology, Innovision-Optics is proud to unveil its latest model, the Mini-Shuttle Camera Tracking System. Like its predecessors, the Z-Shuttle, Super Shuttle, and Mini-Mover, the Mini-Shuttle is a platform system that transports a remote-operated camera along a track mounted to the ceiling or wall.

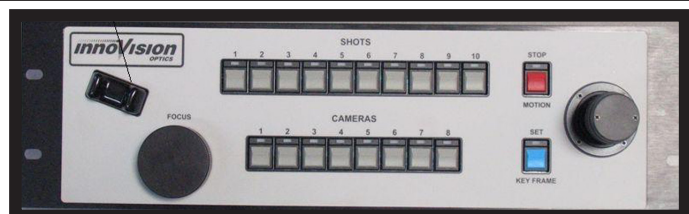
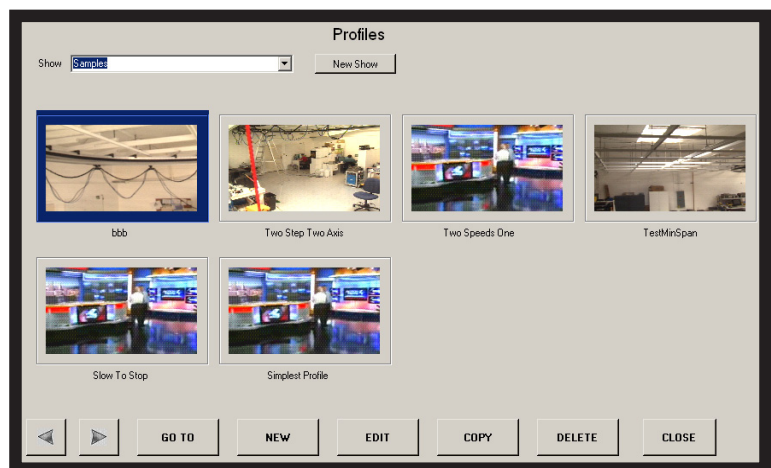
The Mini-Shuttle, is designed specifically for compact block or box cameras.



Mini-Shuttle

Description

The new Mini-Shuttle builds upon past technology by adding a revolutionary bendable dual-rail track, a lightweight remote controlled camera head, and a design that simplifies maintenance. Like Innovision's Z-Shuttle and Super Shuttle, the Mini-Shuttle provides five axes of movement, including; pan, tilt, focus, zoom, and shuttle movement.

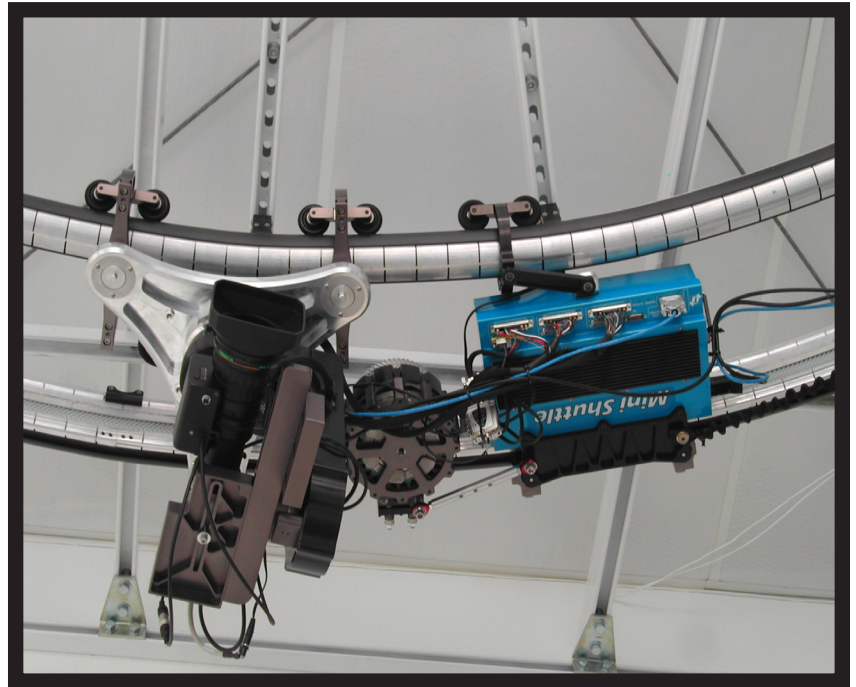


Above: Programmable Software
Below: Desktop Controller

MINI-SHUTTLE

Built to ensure smooth installation and accuracy, the bendable track can be mounted in straight or curved sections.

The lightweight remote-controlled head carries up to 12 lbs. It can work with a variety of popular standard and HD block or box-type cameras including SONY, Panasonic, Ikegami, and Hitachi. Constructed with modular replacable components, the Mini-Shuttle can be maintained with ease.



Bendable Track

Key Specifications

Maximum track length: 100ft (30m)

Minimum track radius: 8ft (2.4m)

Track width: 12in (30)

Maximum speed: 5ft/sec (1.5m/sec)

Height/drop: 24: 24in from top of track to center of lens

Camera/lens load capacity: 12 lbs (5.4kg)

Communication: Ethernet (IP)

Voltage requirement: 110-220 VAC 50-60z

Current requirement: 20A

Mounting options: lighting grid, ceiling or wall

Creative
ways of imaging

innoVISION
OPTICS, INC.

1719 21st Street
Santa Monica, California 90404 USA
www.Innovision-Optics.com
310-453-4866